

SIGNATURE

REINALDO A. GOMEZ

AR0013736

CONSULTANTS

AR0013736

REINALDO A. GOMEZ

02/23/2024

AR0013736

REINALDO A. GOMEZ

PROJECT

REINALDO A. GOMEZ

AR0013736

02/23/2024

RIVERSIDE TOWNHOMES

1300 N RIVERSIDE DR.
POMPANO BEACH, FL 33062

REVISIONS:

02/15/2024 COMMENTS

DATE 06/27/2023

DRAWN: REVIEW

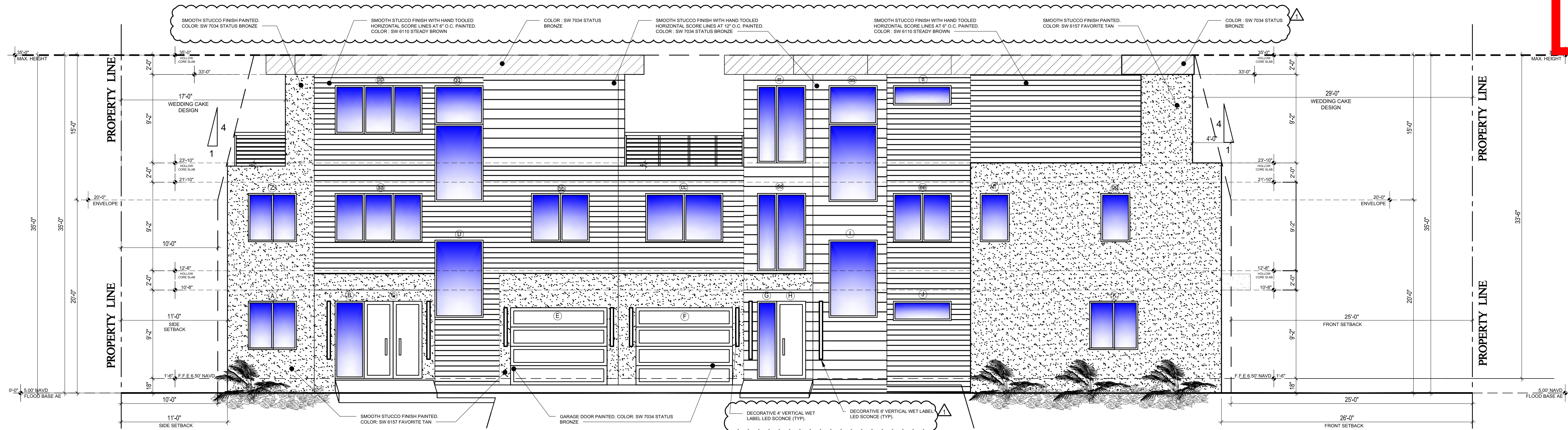
SCALE

DRAWING TITLE:

**WEST & EAST
ELEVATIONS**

SHEET No:

A-7



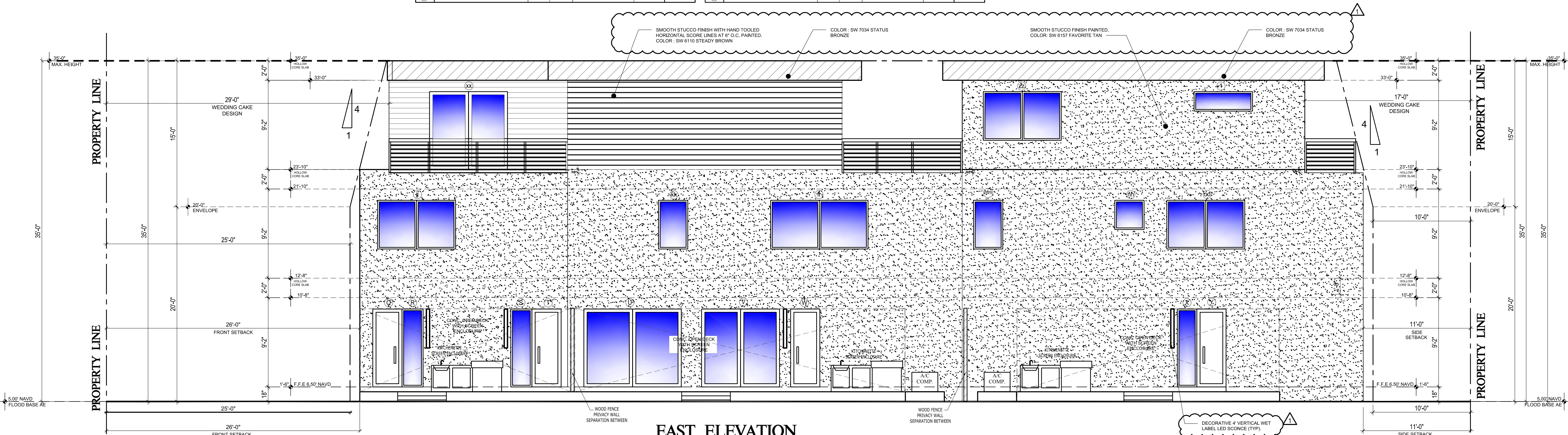
WEST ELEVATION

3/16" = 1'-0"

WINDOW SCHEDULE / DOOR SCHEDULE				
NO.	DESCRIPTION	UNIT SIZE (IN.) WIDTH HEIGHT	GLASS	WIND PRESSURES
				POSITIVE NEGATIVE
(A)	HORIZONTAL SLIDING WINDOW	5'-0" 5'-0"	IMPACT RESISTANT	29.83 32.60
(B)	FIXED WINDOW	3'-0" 8'-0"	IMPACT RESISTANT	27.98 34.19
(C)	DOOR	6'-0" 8'-0"	IMPACT RESISTANT	32.90 33.02
(D)	FIXED WINDOW	5'-0" 8'-0"	IMPACT RESISTANT	31.15 33.93
(E)	GARAGE DOOR	10'-0" 8'-0"	IMPACT RESISTANT	32.60 35.38
(F)	GARAGE DOOR	10'-0" 8'-0"	IMPACT RESISTANT	32.60 35.38
(G)	FIXED WINDOW	2'-0" 8'-0"	IMPACT RESISTANT	27.98 34.19
(H)	DOOR	3'-0" 8'-0"	IMPACT RESISTANT	32.53 33.28
(I)	FIXED WINDOW	5'-0" 8'-0"	IMPACT RESISTANT	32.60 35.38
(J)	FIXED WINDOW	6'-0" 2'-0"	IMPACT RESISTANT	32.16 34.93
(K)	HORIZONTAL SLIDING WINDOW	5'-0" 5'-0"	IMPACT RESISTANT	31.15 33.93
(L)	GARAGE DOOR	10'-0" 8'-0"	IMPACT RESISTANT	32.60 35.38
(M)	HORIZONTAL SLIDING WINDOW	5'-0" 5'-0"	IMPACT RESISTANT	32.60 35.38
(N)	DOOR	3'-0" 8'-0"	IMPACT RESISTANT	32.60 35.38
(O)	FIXED WINDOW	2'-0" 8'-0"	IMPACT RESISTANT	27.98 34.19
(P)	HORIZONTAL SLIDING WINDOW	5'-0" 5'-0"	IMPACT RESISTANT	31.15 33.93
(Q)	DOOR	3'-0" 8'-0"	IMPACT RESISTANT	32.60 35.38
(R)	DOOR	3'-0" 8'-0"	IMPACT RESISTANT	32.60 35.38
(U)	SLIDING GLASS DOOR	10'-0" 8'-0"	IMPACT RESISTANT	32.60 35.38

WINDOW SCHEDULE / DOOR SCHEDULE				
NO.	DESCRIPTION	UNIT SIZE (IN.) WIDTH HEIGHT	GLASS	WIND PRESSURES
				POSITIVE NEGATIVE
(V)	SLIDING GLASS DOOR	8'-0" 8'-0"	IMPACT RESISTANT	27.98 34.19
(W)	DOOR	3'-0" 8'-0"	IMPACT RESISTANT	31.15 33.93
(X)	FIXED WINDOW	2'-0" 8'-0"	IMPACT RESISTANT	32.60 35.38
(Y)	DOOR	3'-0" 8'-0"	IMPACT RESISTANT	32.60 35.38
(Z)	HORIZONTAL SLIDING WINDOW	5'-0" 5'-0"	IMPACT RESISTANT	29.83 32.60
(aa)	HORIZONTAL SLIDING WINDOW	9'-0" 5'-0"	IMPACT RESISTANT	27.98 34.19
(ab)	HORIZONTAL SLIDING WINDOW	6'-0" 5'-0"	IMPACT RESISTANT	32.90 33.02
(ac)	HORIZONTAL SLIDING WINDOW	8'-0" 5'-0"	IMPACT RESISTANT	31.15 33.93
(ad)	FIXED WINDOW	5'-0" 8'-0"	IMPACT RESISTANT	32.60 35.38
(ae)	HORIZONTAL SLIDING WINDOW	6'-0" 5'-0"	IMPACT RESISTANT	32.60 35.38
(af)	CASEMENT WINDOW	3'-0" 5'-0"	IMPACT RESISTANT	27.98 34.19
(ag)	CASEMENT WINDOW	3'-0" 5'-0"	IMPACT RESISTANT	32.53 33.28
(ah)	FIXED WINDOW	6'-0" 2'-0"	IMPACT RESISTANT	32.60 35.38
(ai)	FIXED WINDOW	5'-0" 8'-0"	IMPACT RESISTANT	32.16 34.93
(aj)	HORIZONTAL SLIDING WINDOW	8'-0" 5'-0"	IMPACT RESISTANT	31.15 33.93
(ak)	CASEMENT WINDOW	3'-0" 5'-0"	IMPACT RESISTANT	32.60 35.38
(al)	HORIZONTAL SLIDING WINDOW	10'-0" 5'-0"	IMPACT RESISTANT	32.60 35.38
(am)	CASEMENT WINDOW	3'-0" 5'-0"	IMPACT RESISTANT	27.98 34.19
(an)	CASEMENT WINDOW	3'-0" 3'-0"	IMPACT RESISTANT	32.53 33.28
(ao)	HORIZONTAL SLIDING WINDOW	8'-0" 5'-0"	IMPACT RESISTANT	31.15 33.93

WINDOW SCHEDULE / DOOR SCHEDULE				
NO.	DESCRIPTION	UNIT SIZE (IN.) WIDTH HEIGHT	GLASS	WIND PRESSURES
				POSITIVE NEGATIVE
(ap)	HORIZONTAL SLIDING WINDOW	9'-0" 5'-0"	IMPACT RESISTANT	29.83 32.60
(aq)	FIXED WINDOW	5'-0" 12'-0"	IMPACT RESISTANT	27.98 34.19
(ar)	FIXED WINDOW	5'-0" 8'-0"	IMPACT RESISTANT	32.90 33.02
(as)	FIXED WINDOW	5'-0" 12'-0"	IMPACT RESISTANT	31.15 33.93
(at)	FIXED WINDOW	6'-0" 2'-0"	IMPACT RESISTANT	32.60 35.38
(au)	FIXED WINDOW	6'-0" 2'-0"	IMPACT RESISTANT	32.60 35.38
(av)	HORIZONTAL SLIDING WINDOW	8'-0" 5'-0"	IMPACT RESISTANT	27.98 34.19
(aw)	FIXED WINDOW	5'-0" 8'-0"	IMPACT RESISTANT	32.53 33.28
(ax)	SLIDING GLASS DOOR	8'-0" 8'-0"	IMPACT RESISTANT	32.60 35.38
(ay)	SLIDING GLASS DOOR	10'-0" 8'-0"	IMPACT RESISTANT	32.16 34.93
(az)	HORIZONTAL SLIDING WINDOW	8'-0" 5'-0"	IMPACT RESISTANT	31.15 33.93
(1)	FIXED WINDOW	6'-0" 2'-0"	IMPACT RESISTANT	32.60 35.38
(2)	SLIDING GLASS DOOR	8'-0" 8'-0"	IMPACT RESISTANT	32.60 35.38



EAST ELEVATION

3/16" = 1'-0"